

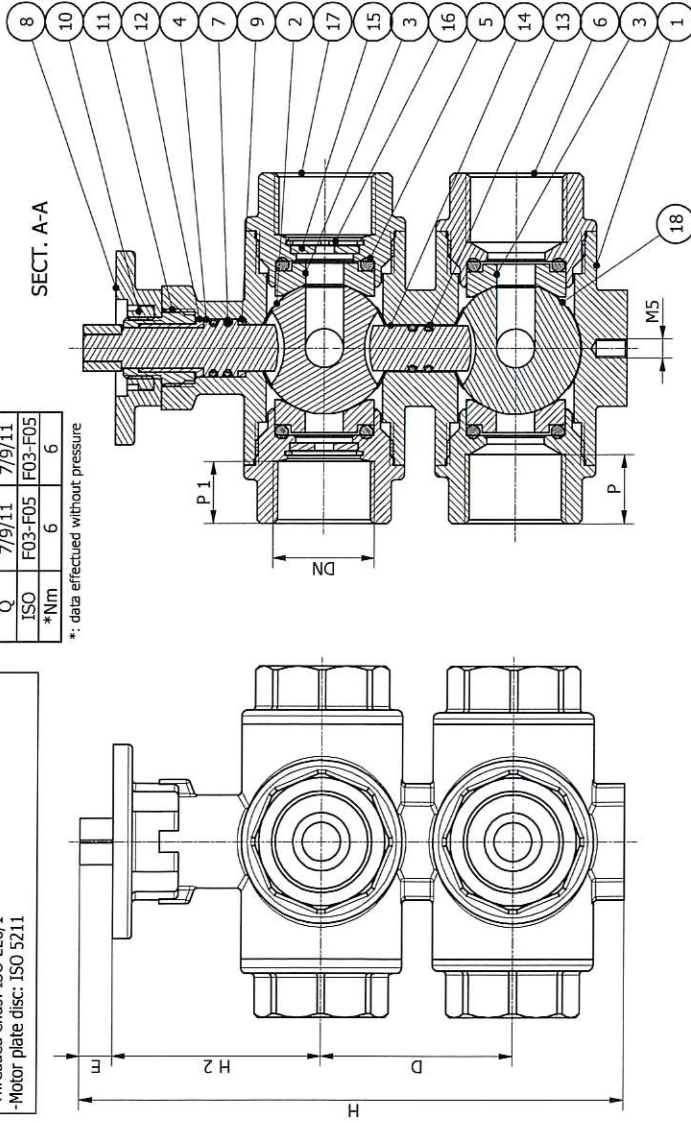
STANDARD VALVE FEATURES

- Working temperature : MIN. -10°C MAX. +100 °C ;
for the passage into the valves of fluid with constant
temperatures below 0°C, the purchaser should refer
to the manufacturer.
- Max pressure : 16 bar
- Max differential pressure: 2 bar
- Threaded ends: ISO 228/1
- Motor plate disc: ISO 5211

DN	1/2"	3/4"
S	88.5	90.5
S1	44.25	45.25
L	72	73
H	142	142
H2	54	54
D	50	50
E	8.5	8.5
P	17	18
P1	15	16
Q	7/9/11	7/9/11
ISO	F03-F05	F03-F05
*Nm	6	6

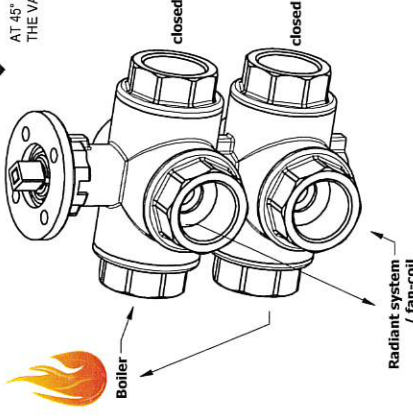
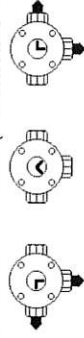
*: data effected without pressure

SECT. A-A



WORKING SCHEME

ROTATION FROM 0° TO 90° (with actuator 0 - 10 V)



*The valve is equipped by the protection against overpressures that may occur in the system, when this one is in "closed" position

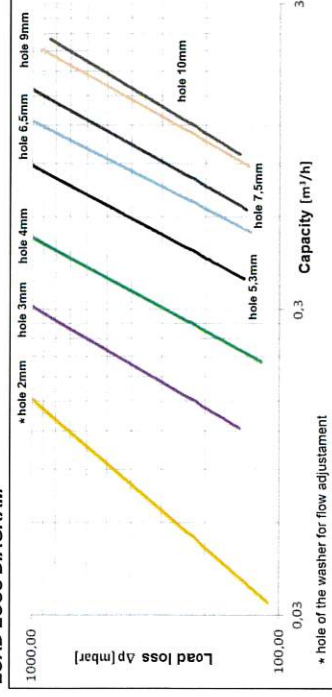
Washers for flow adjustment in different holes

Ø (hole)	Kv (m³/h)
2 mm	0.15
3 mm	0.3
4 mm	0.6
5.3 mm	0.9
6.5 mm	1.3
7.5 mm	1.6
9 mm	2.2
10 mm*	2.5

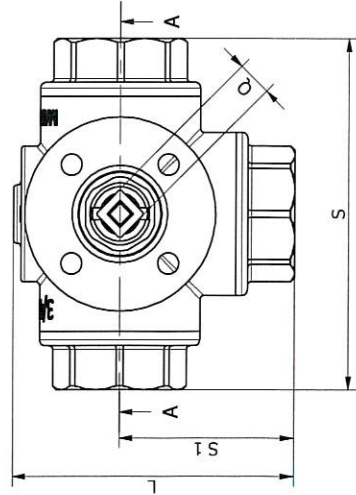
*Without washers



LOAD LOSS DIAGRAM



Ref.	Parts	Material	Q.ty
1	Body	EN12420-CW617N-nickel	1
2	Ball with double milling	EN12165-CW617N-chromium plated	1
3	Seat	P.T.F.E. F391	8
4	Pushrod	EN12164-CW614N	1
5	O-Ring	NBR	8
6	Sleeve	EN12420-CW617N-nickel	4
7	O-Ring	NBR	2
8	Motor plate disc	EN12420-CW617N-nickel	1
9	Antiscuff ring	P.T.F.E. F391	1
10	Nut	EN12164-CW614N	1
11	Nut	EN12164-CW614N	1
12	Antiscuff bush	P.T.F.E. F391	1
13	O-Ring	NBR	2
14	Pushrod junction	EN12164-CW614N	1
15	Washer for flow adjustment	POM	14
16	Elastic ring	Carbon steel for spring	2
17	Sleeve with grue	EN12420-CW617N-nickel	2
18	Ball with one milling	EN12165-CW617N-chromium plated	1



We don't assume the responsibility if you use products which are not consistent with the material used for the construction of our valves. To be used as a guide only, IDROSFER reserve the right to change these data without notice.

ASSEMBLY, USE AND MAINTENANCE INSTRUCTION

EQUIPMENT PRESSURE DESCRIPTION: SIX-WAY BALL VALVE, WITH BRASS BODY
FLOATING BALLS

USE

The intercepted fluid must be compatible with the construction materials of ball valve: brass, PTFE, PTFE reinforced carbographe, FPM, EPDM, NBR, FKM.

THE MAX PRESSURES IN ACCORDING TO THE WORKING TEMPERATURES ARE THE FOLLOWING:

* temperature °C	PN 16	Ball's tightness seats
* -10 °C ÷ 100 °C	16 bar	PTFE

* MATERIAL RESISTENCE'S DATA

WARNING!

**IT IS USEFUL TO EMPTY THE BALL VALVE AND THE SYSTEM COMPLETELY WHEN THE
INTERCEPTED FLUID COULD SOLIDIFY AT TEMPERATURES LOWER THAN 0°C (FOR EX., WATER)
AND INCREASE ITS VOLUME DAMAGING ITS SEALING.**

ASSEMBLY

Before installing make sure the pipe into which the valve is screwed does not show impurities that may damage the ball and the seat tightness causing leaking.

To seal the threadings use a dope compatible with the intercepted fluid without exceeding to avoid useless efforts when assembling.

After installing make sure the valve does not undergo stresses due to an exceeding anchorage distance or to unparallel pipes, then, support the pipes with the proper clamps.

The valve must be manoeuvred exclusively with the lever handle supplied with the kit without using any other supplementary lever handles.

Turn the lever handle by 90° clockwise to close the valve until it reaches its beat.

Turn the lever handle by 90° anticlockwise to open the valve until it reaches its beat.

The ball valve must always be fully open or fully closed.

Any intermediate position of the valve may cause long-lasting bucklings of the tightness seats which make the intercepted fluid leak.

To avoid water hammering on the pipes manoeuvre the valve by a gradual rotation.

When testing the systems never use pressures higher than the nominal pressure shown on the valves; that could buckle the seats and the gaskets and damage their sealing irremediably.

MAINTENANCE

Before take a valve apart, make sure that the pipe are not under pressure.

Every six months check the valve visually to verify there are no defects that may cause problems when using it and, if the case, replace it. Before acting on the valve make sure that the pipes are not under pressure.

We are not responsible in case of tampering of our valves without our authorization, in this case the warranty expires.

WASTE DISPOSAL

After replacement of the valve, it must be disposed according to the laws (about the waste disposal) of the Country of destination.

The waste (disused valve) can also be identified as recyclable material.

LIST OF INCOMPATIBLE SUBSTANCES



Many chemical substances react in a dangerous way when they come in touch with others.

Please find below a list of the main incompatible substances, by way of a non-limiting example.

Acetylene	with copper (piping), halogens, silver, mercury and their compounds
Acetone	with concentrated mixtures of sulphuric and nitric acid
Acetic acid	with chromic acid, nitric acid, hydroxyls, ethylene glycol, perchloric acid, peroxides and permanganates
Chromic acid	with acetic acid, naphthalene, camphor, alcohol, glycerol, turpentine and inflammable fluids
Nitric acid	with acetic, chromic and cyanogenic acid, aniline, carbon, hydrogen sulphide, fluids, gases and substances that are promptly nitrated
Oxalic acid	with silver and mercury
Perchloric acid	with acetic anhydride, bismuth and its alloys, alcohol, paper, wood, fats and other organic substances
Hydrogen sulphide	with nitric acid and oxidants.
Sulphuric acid	with chlorates, perchlorates, permanganates and water.
Alcohols and Polyols	with nitric acid.
Anhydrous ammonia	with mercury, halogens, calcium hypochlorite and hydrogen fluoride
Ammonium nitrate	with acids, metal powders, sulphur, combustible materials
Aniline	with nitric acid and hydrogen peroxide
Silver	with acetylene, oxalic acid, tartaric acid and ammoniac compounds
Arsenic (materials containing)	with any reducing agent
Azides	with water.
Chlorine dioxide	with ammonia, methane, phosphine, hydrogen sulphide
Bromine	with ammonia, acetylene, butadiene, butane, hydrogen, sodium carbide, turpentine and
Activated carbon	with all oxidizing agents, calcium hypochlorite
Cyanides	with acids and alkali
Chlorates	with ammonia salts, acids, metal powders, sulphur, finely pulverized organic and flammable compounds and carbon
Chlorine	with ammonia, acetylene, butadiene, petrol and other by-products of oil, hydrogen, sodium carbide, turpentine and finely pulverized metals
Chloroform	with sodium and potassium
Chlorides	with sulphuric acid
Dichloromethane	with sodium and potassium
Chlorine dioxide	with ammonia, methane, phosphine, hydrogen sulphide
Fluorine	with all other chemical substances
(White) phosphorus	with air, oxygen, alkali, reducing agents
Hydrocarbons in general	with fluorine, chlorine, formic acid, chromic acid, sodium peroxide
Hydrogen sulphate	with nitric acid vapours and oxidizing gasses
Iodine	with acetylene and ammonia
Hypochlorite	with acids, activated carbon
Flammable fluids	with ammonium nitrate, chromic acid, hydrogen peroxide, nitric acid, sodium peroxide and halogens
Mercury	with acetylene, fulminic acid, hydrogen
Alkaline metals (e.g. calcium, potassium, sodium)	with water, carbon dioxide, carbon tetrachloride, and other chlorinated hydrocarbons
Ammonium nitrate	with acids, metal powders, flammable fluids, chlorates, nitrates, sulphur and finely pulverized organic substances or flammable compounds
Nitrites and Nitrates	with acids
Nitroparaffin	with inorganic bases, amines
Calcium oxide	with water
Oxygen	with oils, fats, hydrogen, flammable fluids, solids and gasses
Phosphorus pentoxide	with water
Potassium perchlorate	with sulphuric acid and other acids.
Potassium permanganate	with glycerol, ethylene glycol, benzaldehyde and sulphuric acid
Hydrogen peroxide	with chromium, copper, iron, most other metals and their salts, flammable fluids and other combustible materials, aniline and nitromethane
Sodium peroxide	with any oxidizable substance, such as methanol, glacial acetic acid, acetic anhydride, benzaldehyde, carbon disulphide, glycerol, ethyl acetate and furfural.
Potassium	with carbon tetrachloride, carbon dioxide, water, chloroform, dichloromethane
Copper	with acetylene, azide and hydrogen peroxide
Sodium	with carbon tetrachloride, carbon dioxide, water, chloroform, dichloromethane
Sodium azide	with lead, copper and other metals. This compound is usually employed as a preservative, but it forms unstable and explosive compounds with metals
Selenium	with reducing agents
Sulphides	with strong acids
Carbon tetrachloride	Sodium, potassium

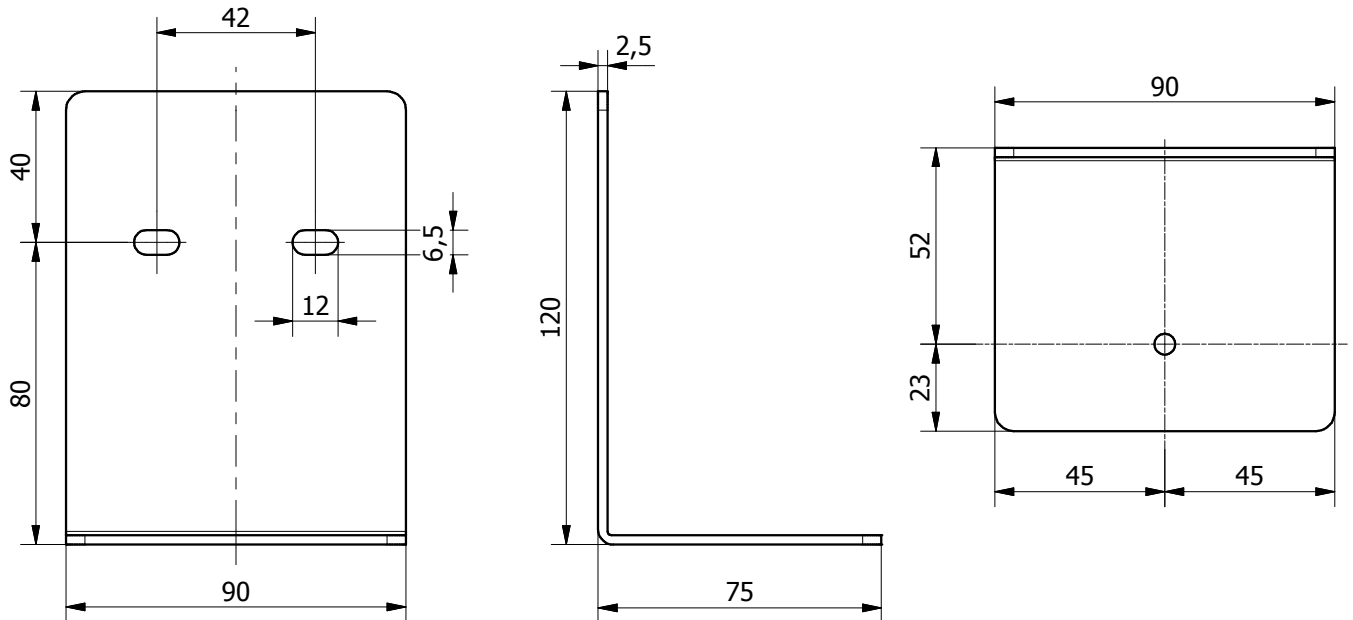
A pair of blue-handled pliers with black jaws. The handles are blue with black text. The top handle has the 'FERRI' logo. The bottom handle has the text 'Art. 0248 C.V. 12-019 - 60mm'. The jaws are black and pointed.

Length: 175 mm

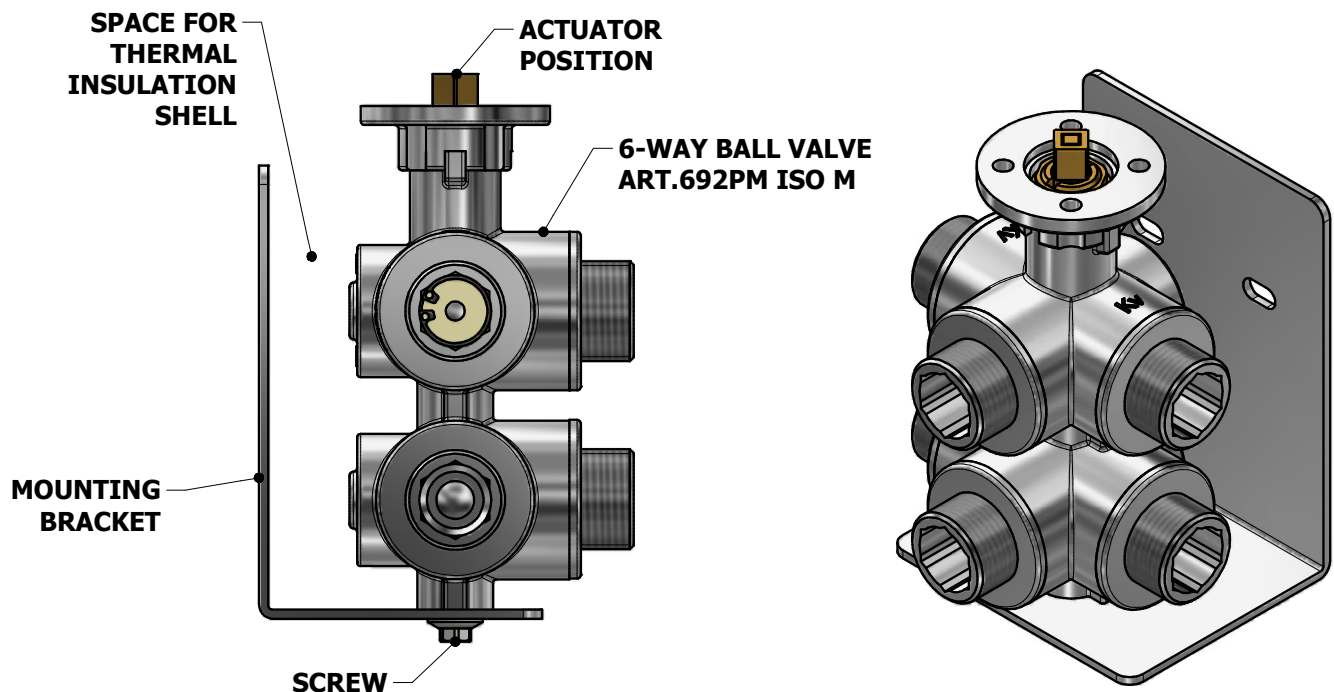
ED. N°	Data	Descrizione modifiche														
	Descrizione								Cod. artic.							
	Wrench for elastic ring								Ed. N°							
	Disegn. <i>D. Agarla</i>	Verif.	Appr.	Data	13/09/2019	Scala	Sost. dis.									
		Materiale				Trattamento		Dis. CAD								
	Conicità di estrazione		2°	Raggi non quotati		R1	Smussi non quotati		1 x 45°	Peso artic.						
Filettature UNI ISO 228/1	Tolleranze generali: ISO 2768 - m		> 0.5 fino a 6		> 6 fino a 30		> 30 fino a 120		> 120 fino a 400		> 400 fino a 1000		> 1000 fino a 2000		> 2000 fino a 4000	
Rugosità generale $\sqrt{3.2}$			±0.1		±0.2		±0.3		±0.5		±0.8		±1.2		±2.0	
IDROSFER si riserva a termini di legge la proprietà del presente disegno con divieto di riprodurlo o comunicarlo a terzi senza sua autorizzazione.																

MOUNTING BRACKET FOR ART. 692PM ISO M

DIMENSIONS OF THE 6-WAY VALVE'S MOUNTING BRACKET



ASSEMBLY DESIGN OF THE 6-WAY VALVE WITH MOUNTING BRACKET



Idrosfer declines every responsibility if products that are not compatible with materials used for the construction of their valves are identified.
To be used as a guide only, Idrosfer reserves the right to modify these details if deems it appropriate and without giving prior notice.